



HAUTE COUTURE

DESIGN



**JUST AS IN FASHION,
WHERE CLOTHING IS CREATED TO SEDUCE AND PLEASE,
“HAUTE COUTURE” WILL BECOME THE TREND
OF HOME INTERIOR TEXTILE DESIGN.**

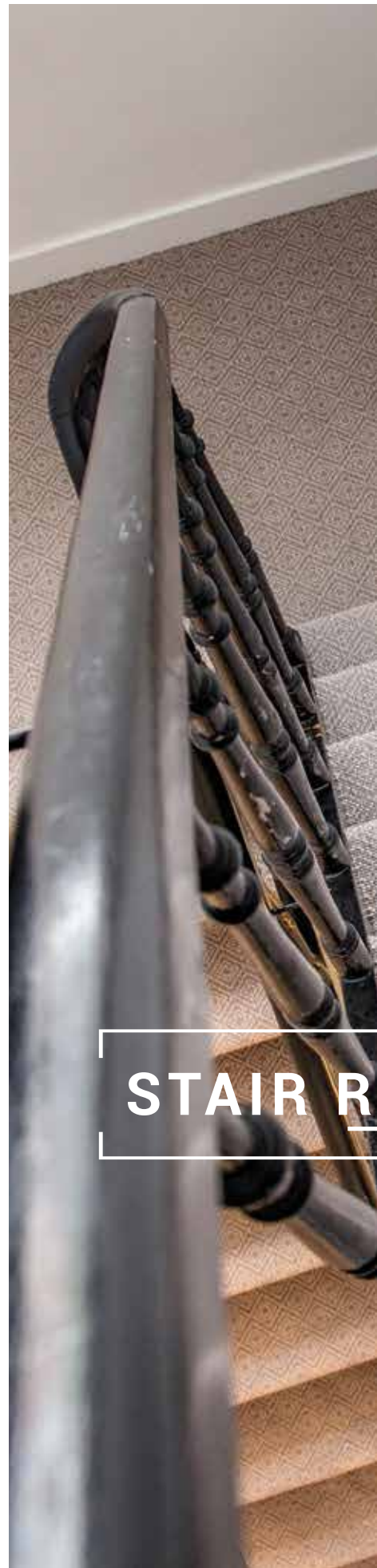


TABLE OF CONTENTS

4.	THE SLEEPING GIANT IS AWAKE
6.	A NEW ERA FOR BROADLOOM
8.	INTEGRATED FELT BACKING
10.	CARPET
12.	WW - WOOL WOOL
14.	ZIG
16.	ZAG
20.	ARI
22.	DIAMOND
24.	CITY STRIPE URBAN MOVE
26.	CP - COTTON POLYAMIDE
30.	AGRA
32.	BATIK
34.	CORAL
36.	JACOB
40.	PATCH
42.	SO CHIC
44.	CW - COTTON WOOL
48.	GIORGIO
50.	KARL
52.	MIUCCIA
54.	STAIR RUNNERS
66.	TAILOR MADES
72.	THE SEAM
74.	TECHNICALS



CARPET



STAIR R



UNNERS



TAILOR MADES



THE SLEEPING GIANT IS AWAKE

“LIFE IS NOT A LONG QUIET RIVER”

This famous quote aptly describes the history of Louis de Poortere. Founded in 1929 by its eponym, Louis' company had by the 1960s, become the backbone of the carpet weaving industry in Europe. The company has been consistently recognised by the high quality of its products and its commitment to serve and satisfy its customers at all cost. The next chapter in the story has many highs and a number of lows, which at times almost jeopardised the company's future. After 2000, the company was taken over by new shareholders with a fierce desire to establish once again a company worthy of the illustrious name Louis de Poortere. The journey has been long but even in times of global economic turmoil the original philosophy of Louis de Poortere led to a real rejuvenation of the company, recording numerous commercial successes, each founded on quality and service and always with a focus on innovation. Today we can say with pride that our reputation continues and in the words of one of our most loyal customers " the sleeping giant is awake".

PHILOSOPHY

The Louis De Poortere philosophy is based on a simple concept : we aim to be more than just a manufacturer of carpets. In branching into home decorating, we have had to increase our creativity to meet your aesthetic requirements, and this has stimulated us to transform the generic into magic.

Because people are increasingly seeking beauty, elegance, value and comfort for their homes, our designers and technicians have created entire collections that are modern and accessible, and designed to bring you the utmost pleasure. Because your demands are becoming increasingly specific and your tastes more assured, we have developed bold concepts that are simple and attractive and will enable you to easily reach ultimate sophistication in your floorcovering. At Louis De Poortere you will find rugs, carpets, stair runners and even border rugs, which you can freely mix and match to make your decorating "home sweet home" experience a pleasure. Our passion is to offer you this pleasure.

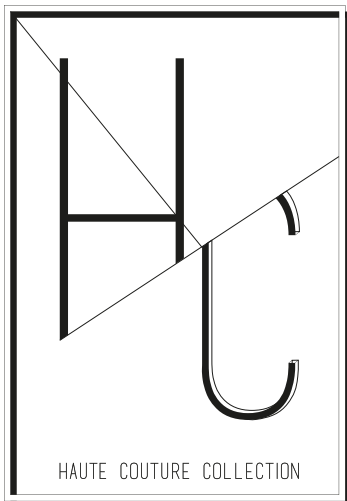
SINCE 1929



HAUTE COUTURE DESIGN

HAUTE COUTURE DESIGN IS A PROGRAM CREATED IN THE TRADITION OF CARPETS AND RUGS WITH A JACQUARD DESIGN BUT USING A MODERN AND REJUVENATED TECHNIQUE THAT GIVES OUR TEXTILE A NEW ENERGY AND A GREAT SEDUCTION. JUST AS IN FASHION, WHERE CLOTHING IS CREATED TO SEDUCE AND PLEASE, "HAUTE COUTURE DESIGN" WILL BECOME THE TREND OF HOME INTERIOR TEXTILE DESIGN. HAUTE COUTURE DESIGN WAS DESIGNED TO DRESS THE FLOOR OF EACH INTERIOR ROOM OF APARTMENTS, HOUSES, OFFICES, AND WHY NOT, AIRPLANES, TRAINS AND BOATS ON THE WAY TO UNEXPECTED PLACES. HAUTE COUTURE DESIGN COMES IN THREE DISTINCT FAMILIES, EACH MEETING THE MOST STRINGENT CRITERIA OF WEAR.

A NEW ERA FOR BROADLOOM



THE BIRTH OF HAUTE COUTURE

Louis de Poortere enhances its reputation as a premium producer of rugs and broadloom carpet, taking manufacture of the latter to new levels with the introduction of the Haute Couture Design.

Wholly deserving of its "high fashion" name, Haute Couture Design is classy and elegant yet fitting for use in both traditional and contemporary settings. With no fewer than 80 designs ready to hold sway in a plethora of colourways, Zag, Zig, So Chic, Coral, Karl, Giorgio, Jacob, Diamond, Miucca, Agra and Patch prove that versatility was high on the priority list when the concept of Haute Couture Design was born.

There really is a myriad of design possibility with Louis de Poortere's latest in wall-to-wall product, Haute Couture Design mixing wool and chenille naturals with high gloss polyester in a 2.95 metre width, whether

intricate patterning, electric colour or a combination of the two is desired. With individuality being added to the home there's no need to bow to convention, Haute Couture Design is a collection boasting inspiration from Morocco, Scandinavia and beyond.

Haute Couture Designs exquisite surface feel is matched by its high quality felt backing, allowing for extra comfort and a simpler installation process in both domestic and contract locations. Suitable for use with underfloor heating, durable when faced with castor traffic and excellent in its sound absorption, Haute Couture Design may shine in the aesthetic department, but also holds practicalities in equal regard.

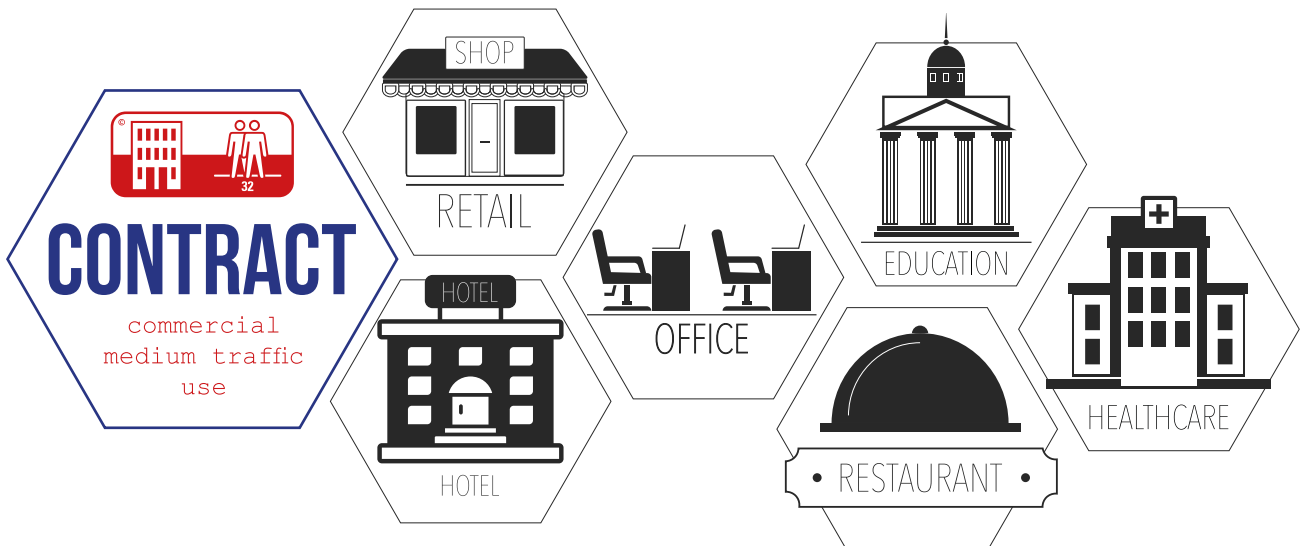
A culmination of years of advancements in weaving capability, this is an exciting new era for what is an established brand.

- ✓ EASY TRANSPORT
- ✓ EASY MAINTENANCE
- ✓ UNIQUE COMFORT
- ✓ INTEGRATED BACKING

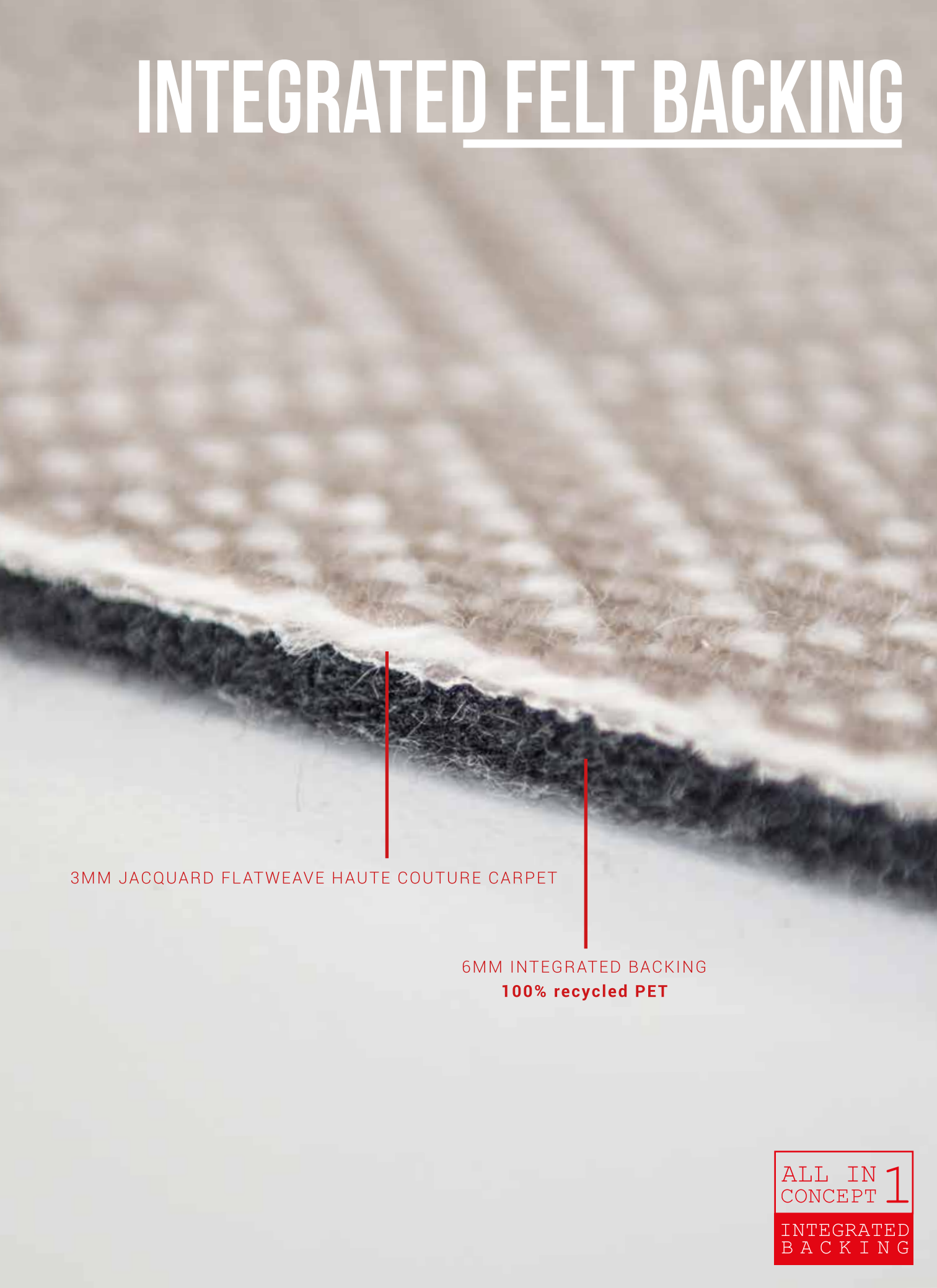
SUITABLE FOR DOMESTIC USE



SUITABLE FOR COMMERCIAL USE



INTEGRATED FELT BACKING



3MM JACQUARD FLATWEAVE HAUTE COUTURE CARPET

6MM INTEGRATED BACKING
100% recycled PET

ALL IN 1
CONCEPT

INTEGRATED
BACKING

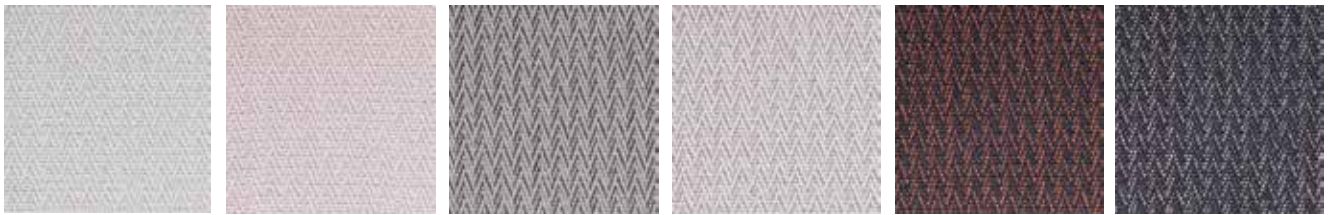


CARPET

*Flooring is the foundation of any beautiful room.
Start with a Haute Couture carpet and the rest will fall into place.*



WW ZIG 8934 WW ZIG 8935 WW ZIG 8932 WW ZIG 8933 WW ZAG 8609 WW ZAG 8450



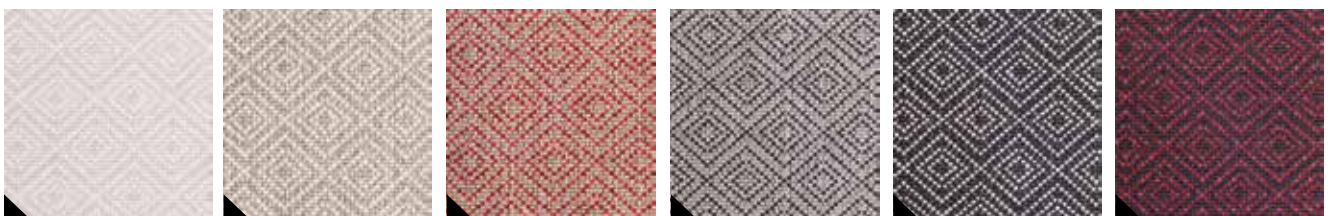
ZAG 8451 ZAG 8452 ZAG 8453 ZAG 8610 ZAG 8611 ZAG 8612



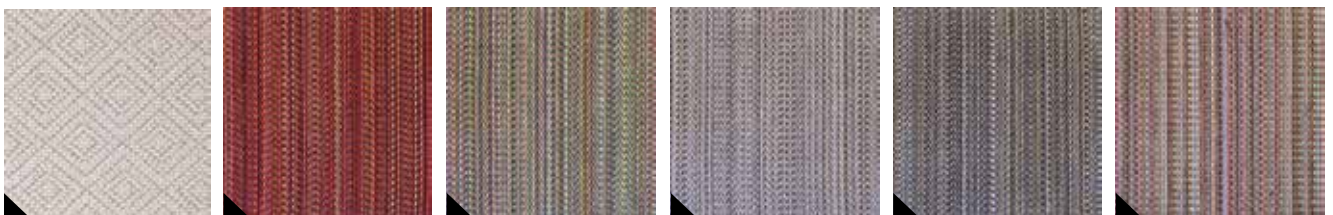
ZAG 8613 ARI 8454 ARI 8455 ARI 8456 ARI 8457 ARI 8458



ARI 8459 ARI 8461 ARI 8544 ARI 8619 DIAMOND 8600 DIAMOND 8601



DIAMOND 8602 DIAMOND 8603 DIAMOND 8604 DIAMOND 8605 DIAMOND 8606 DIAMOND 8608



DIAMOND 8620 CITY STRIPE 8694 CITY STRIPE 8695 CITY STRIPE 8696 CITY STRIPE 8697 URBAN MOVE 8693

▲ available as stair runner

ALL IN
CONCEPT 1
INTEGRATED
BACKING

100% WOOL

POLYESTER BACKING

JACQUARD FLATWEAVE

9^{MM}
HEIGHT
0,35"

MADE IN
BELGIUM

295^{CM}
WIDTH
9'8"

2215^{GR | M²}
WEIGHT
65,3oz

GLUED^{fit}



THE FULL HAUTE COUTURE PROGRAM HAS BEEN TESTED ON MAINTENANCE AND FITTING REQUIREMENTS.
TO GET YOUR MAINTENANCE ADVICE AND FITTING INSTRUCTIONS, VISIT OUR WEBSITE LOUISDEPOORTERE.COM

THE HC COLLECTION CONTRIBUTES TO YOUR BREEAM AND LEED PROJECTS

NOTE : SLIGHT MARKS AND VARIATIONS IN THE SURFACE COLOUR AND TEXTURE ARE AN INHERENT
CHARACTERISTIC AND SHOULD NOT BE MISTAKEN AS A FAULT, THEY ARE PART OF THEIR UNIQUE APPEAL.

ALL PATENTS RIGHTS RESERVED © PROTECTED DESIGNS



ZIG

WW ZIG 8934

PATTERN REPEAT
WIDTH : 3CM | 1,18" - LENGTH : 8CM | 3,15"



WW ZIG 8934



WW ZIG 8935



WW ZIG 8934



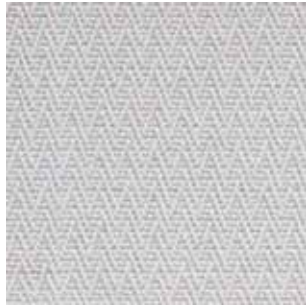
WW ZIG 8932



WW ZIG 8933



WW ZAG 8450



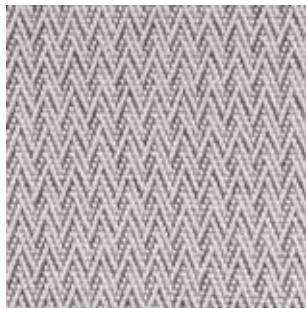
WW ZAG 8451



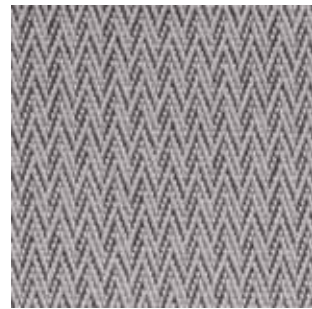
WW ZAG 8452



WW ZAG 8610



WW ZAG 8609



WW ZAG 8453



WW ZAG 8613



WW ZAG 8611



WW ZAG 8612

PATTERN REPEAT

WIDTH : 1,5CM | 0,6" - LENGTH : 2CM | 0,8"

ZAG

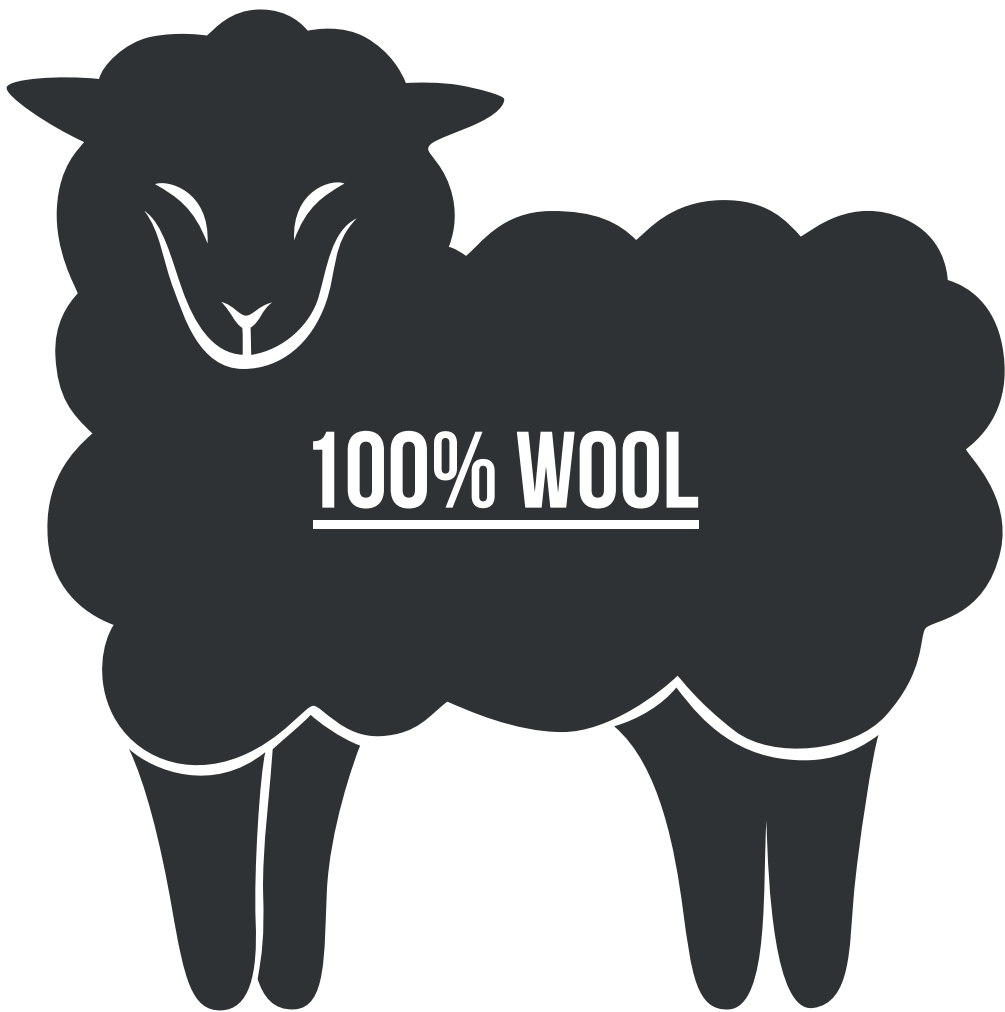


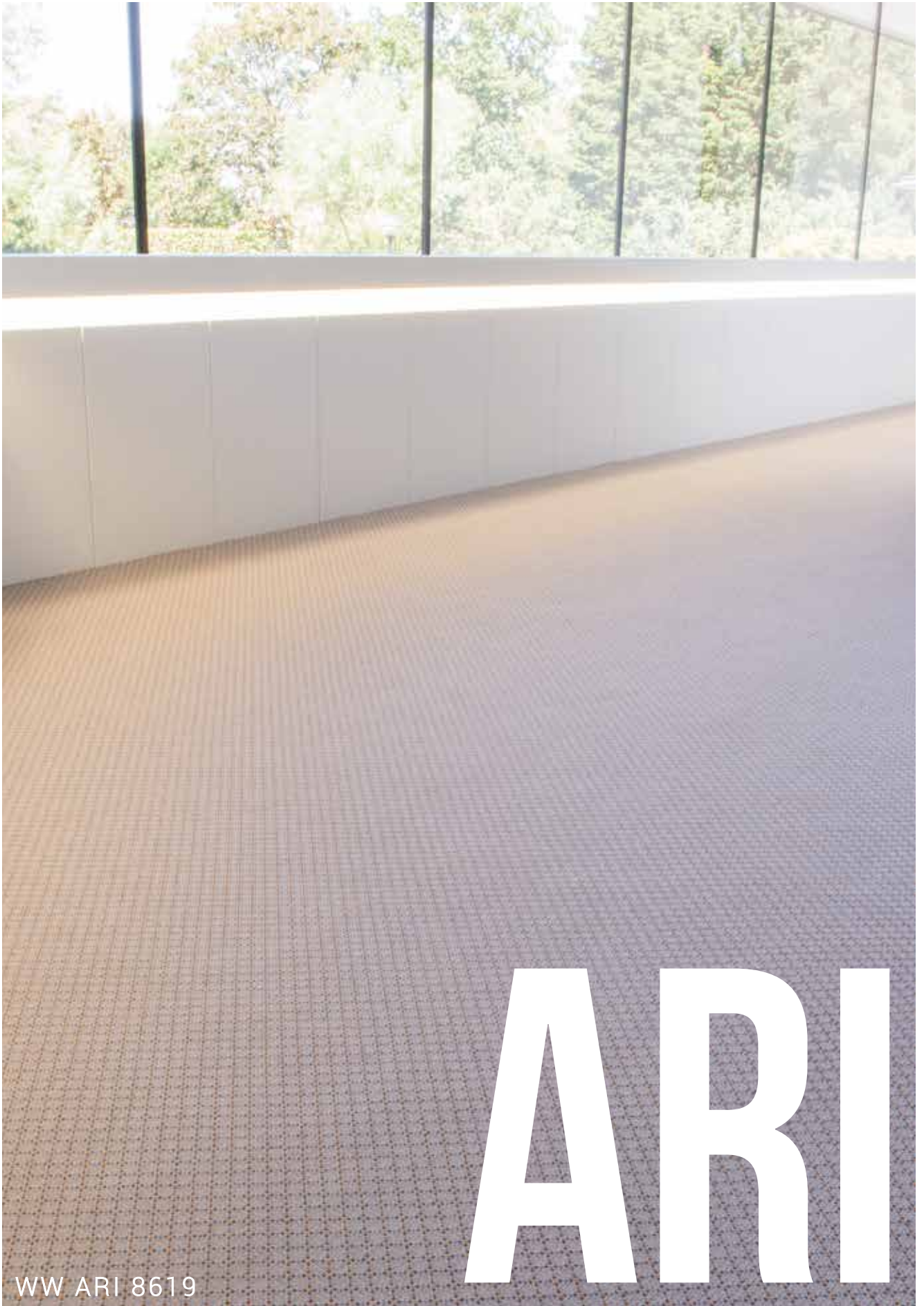
WW ZAG 8609



**THE DETAILS ARE NOT THE DETAILS.
THEY MAKE THE DESIGN!**

- CHARLES EAMES -





WW ARI 8619

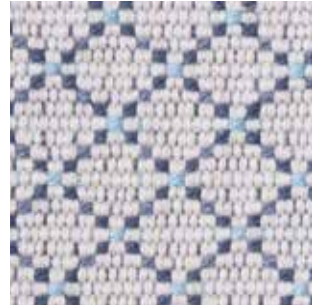
ARI



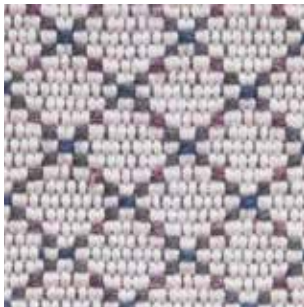
WW ARI 8456



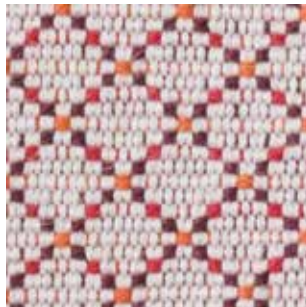
WW ARI 8457



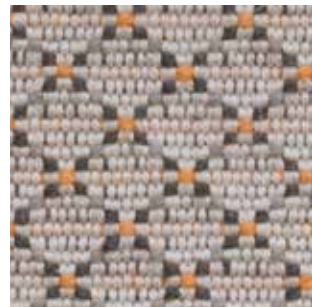
WW ARI 8454



WW ARI 8455



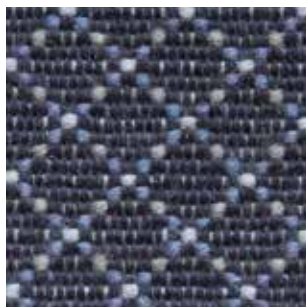
WW ARI 8544



WW ARI 8619



WW ARI 8458



WW ARI 8459



WW ARI 8461



PATTERN REPEAT

WIDTH : 3CM | 1,18" - LENGTH : 2,5CM | 1"



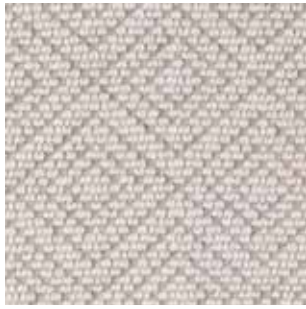
WW DIAMOND 8600



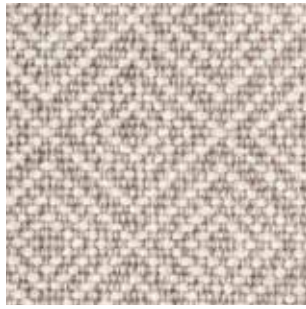
WW DIAMOND 8601



WW DIAMOND 8602



WW DIAMOND 8620



WW DIAMOND 8603



WW DIAMOND 8605



WW DIAMOND 8606



WW DIAMOND 8604



WW DIAMOND 8608



WW DIAMOND 8600



WW DIAMOND 8600

PATTERN REPEAT

WIDTH : 6,5CM | 2,56" - LENGTH : 8,5CM | 3,35"



DIAMOND



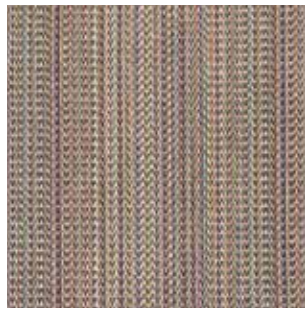
CITY STRIPE URBAN MOVE

PATTERN REPEAT CITY STRIPE
WIDTH : 12,5CM | 4,9" - LENGTH : NO PATTERN REPEAT

PATTERN REPEAT URBAN MOVE
WIDTH : 16,25CM | 6,4" - LENGTH : NO PATTERN REPEAT



WW CITY STRIPE 8694



WW CITY STRIPE 8695



WW CITY STRIPE 8696



WW CITY STRIPE 8697



WW URBAN MOVE 8693



CP AGRA 8997



CP AGRA 8998



CP AGRA 8999



CP AGRA 9000



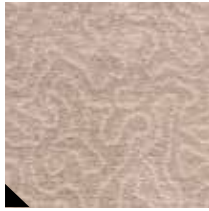
CP BATIK 8987



CP BATIK 8988



CP BATIK 8989



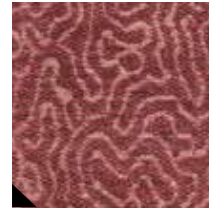
CP CORAL 9005



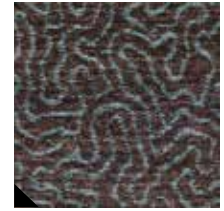
CP CORAL 9004



CP CORAL 9006



CP CORAL 9003



CP CORAL 9002



CP CORAL 9001



CP JACOB 8983



CP PATCH 8986



CP PATCH 8994



CP PATCH 8995



CP PATCH 8996



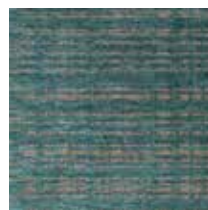
CP SO CHIC 8492



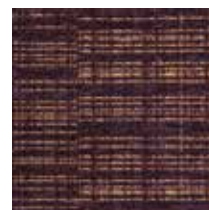
CP SO CHIC 8491



CP SO CHIC 8490



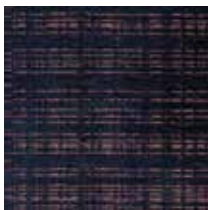
CP SO CHIC 8493



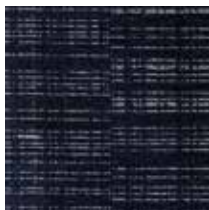
CP SO CHIC 8481



CP SO CHIC 8483



CP SO CHIC 8480



CP SO CHIC 8484



CP SO CHIC 8482

75%PA - 15%PE - 10%CO

POLYESTER BACKING

JACQUARD FLATWEAVE

9^{MM}
HEIGHT
0,35"

MADE IN
BELGIUM

295^{CM}
WIDTH
9'8"

2192^{GR | M²}
WEIGHT
64, 6oz

GLUED^{fit}



THE FULL HAUTE COUTURE PROGRAM HAS BEEN TESTED ON MAINTENANCE AND FITTING REQUIREMENTS.
TO GET YOUR MAINTENANCE ADVICE AND FITTING INSTRUCTIONS, VISIT OUR WEBSITE LOUISDEPOORTERE.COM

THE HC COLLECTION CONTRIBUTES TO YOUR BREEAM AND LEED PROJECTS

NOTE : SLIGHT MARKS AND VARIATIONS IN THE SURFACE COLOUR AND TEXTURE ARE AN INHERENT
CHARACTERISTIC AND SHOULD NOT BE MISTAKEN AS A FAULT, THEY ARE PART OF THEIR UNIQUE APPEAL.

ALL PATENTS RIGHTS RESERVED © PROTECTED DESIGNS

CP
COTTON POLYAMIDE



**A SOFT AND SUPPLE FLATWEAVE CARPET IN POLYAMIDE CHENILLE,
HIGHLIGHTED WITH THE USE OF A GLOSSY YARN.
THE DESIGNS ARE A SURPRISING MIX OF ALL OVERS AND FAUX GEOMETRICS
WITH A SPRINKLE OF VINTAGE.**



CORAL

AGRA



WW AGRA 8998



CP AGRA 8997



CP AGRA 8999



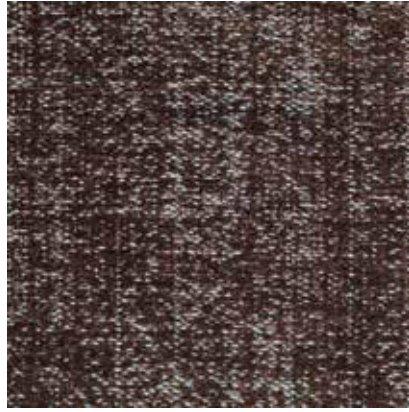
CP AGRA 8998



CP AGRA 9000



CP BATIK 8987



CP BATIK 8988



CP BATIK 8989

**IN ORDER TO BE IRREPLACEABLE,
ONE MUST ALWAYS BE DIFFERENT.**

- Coco Chanel -



CP BATIK 8988

PATTERN REPEAT
WIDTH : 295CM | 9'8" - LENGTH : 42CM | 1'5"





PATTERN REPEAT

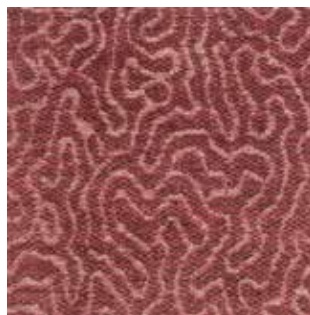
WIDTH : 49CM | 1'7" - LENGTH : 48CM | 1'6,9"



CP CORAL 9005



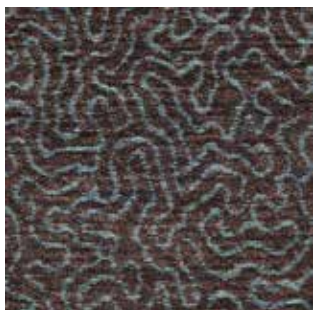
CP CORAL 9001



CP CORAL 9003



CP CORAL 9006



CP CORAL 9002



CP CORAL 9004

CORAL



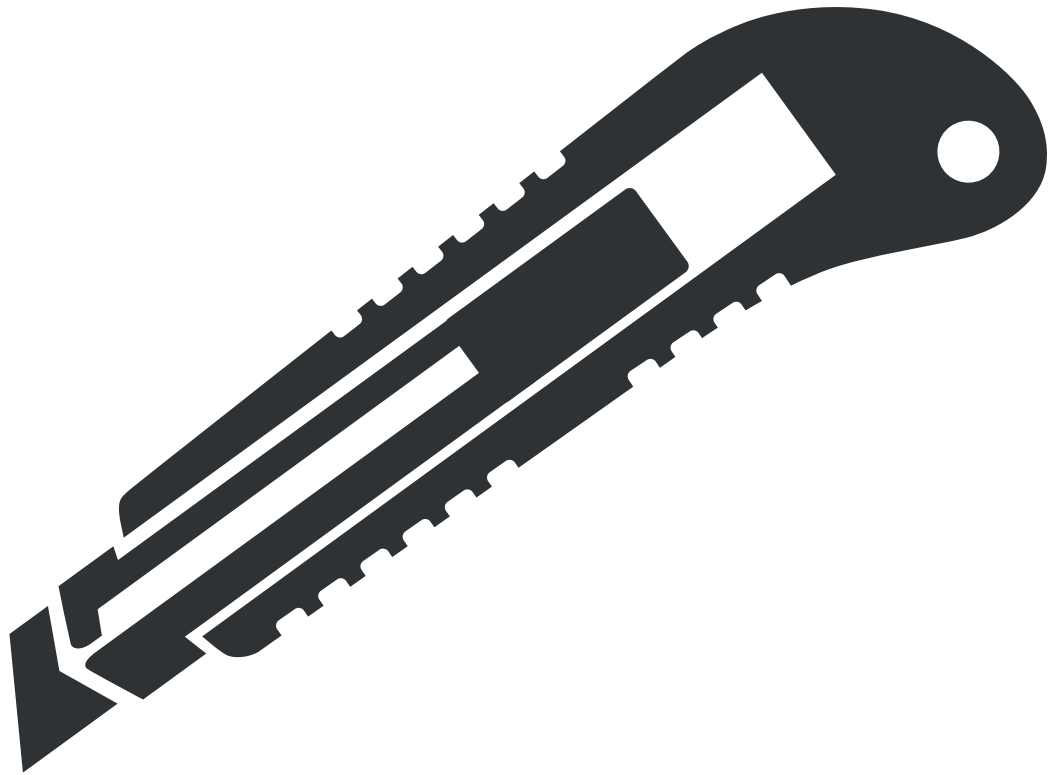
CP CORAL 9002



CP JACOB 8983



**EASY
TO FIT**

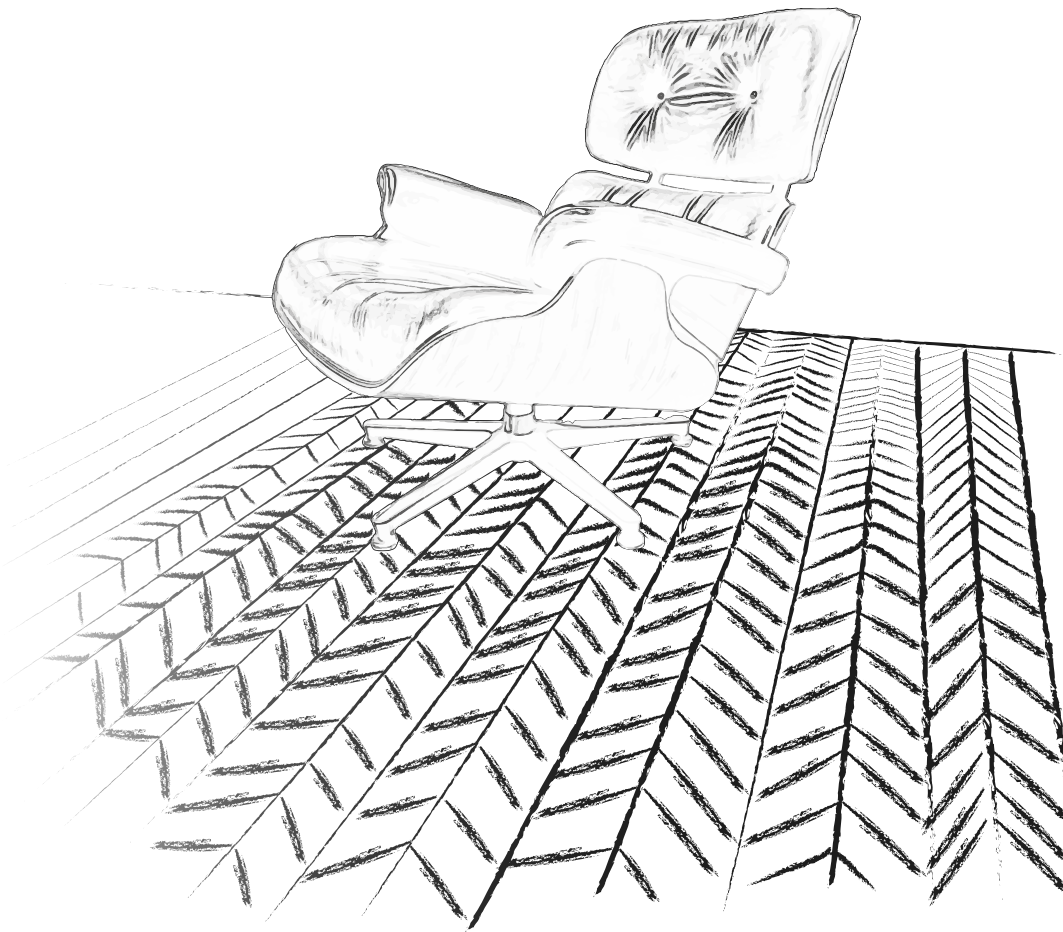


FOR THE FITTING INSTRUCTIONS, VISIT OUR WEBSITE LOUISDEPOORTERE.COM

JACOB



CP JACOB 8983



ELEGANCE IS THE ONLY BEAUTY THAT NEVER FADES

- Audrey Hepburn -

PATTERN REPEAT

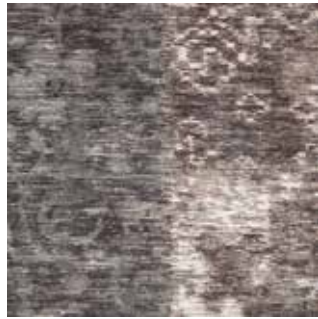
WIDTH : 295CM | 9'8" - LENGTH : 155CM | 5'1"



CP JACOB 8983



CP PATCH 8986



CP PATCH 8994



CP PATCH 8995



CP PATCH 8996

PATTERN REPEAT

WIDTH : 147CM | 4'10" - LENGTH : 276CM | 9'0,7"



CP PATCH 8994

A photograph of a modern interior. In the foreground, a large, patterned rug in shades of blue, green, and beige covers the floor. In the background, a round brass coffee table with a stack of books sits next to a wooden chair with a white cushion. A fireplace with logs is visible in the distance.

PATCH

CP PATCH 8995



SO CHIC

CP SO CHIC 8481



CP SO CHIC 8492



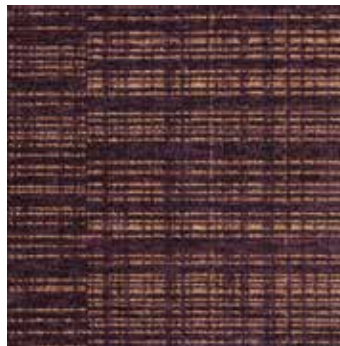
CP SO CHIC 8491



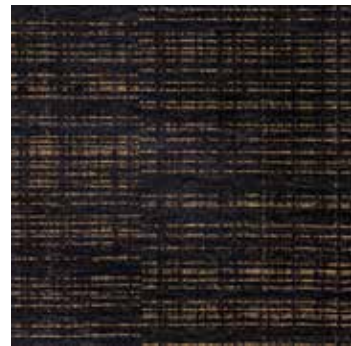
CP SO CHIC 8490



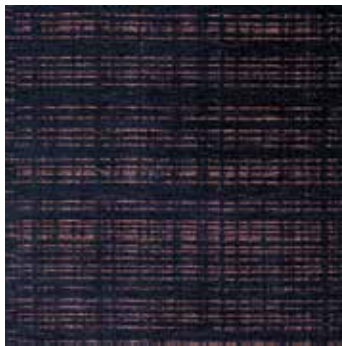
CP SO CHIC 8493



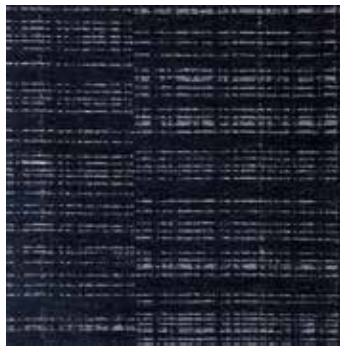
CP SO CHIC 8481



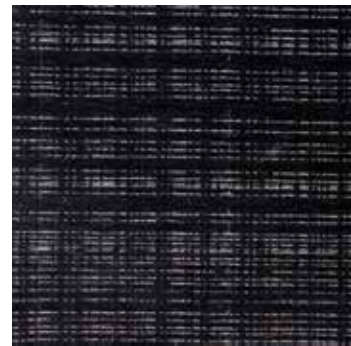
CP SO CHIC 8483



CP SO CHIC 8480



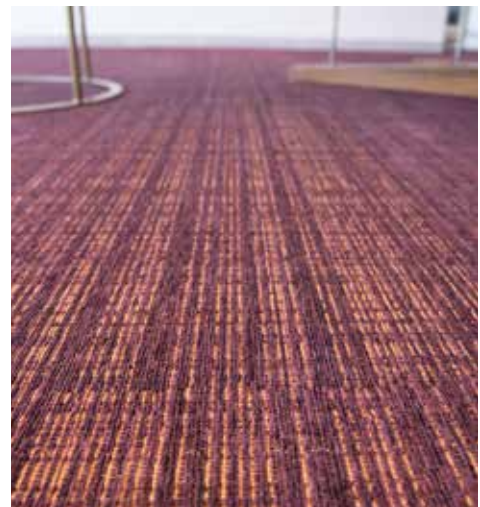
CP SO CHIC 8484

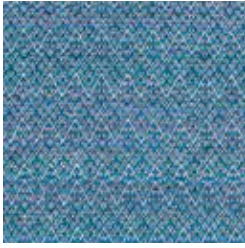


CP SO CHIC 8482

PATTERN REPEAT

WIDTH : 100CM | 3'4" - LENGTH : 46,5CM | 1'6"





CW GIORGIO 8964



CW GIORGIO 8965



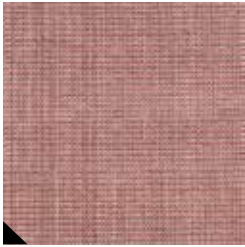
CW GIORGIO 8966



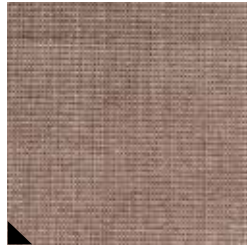
CW GIORGIO 8967



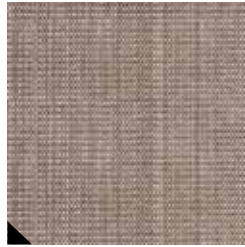
CW KARL 8971



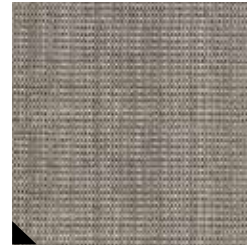
CW KARL 8972



CW KARL 8973



CW KARL 8974



CW KARL 8968



CW KARL 8969



CW KARL 8970



CW KARL 8975



CW KARL 8980



CW MIUCCIA 8976



CW MIUCCIA 8977



CW MIUCCIA 8978



CW MIUCCIA 8979

75% WOOL - 25% CO

POLYESTER BACKING

JACQUARD FLATWEAVE

9^{MM}
HEIGHT
0,35"

MADE IN
BELGIUM

295^{CM}
WIDTH
9'8"

2032^{Gr | M²}
WEIGHT
59,9oz

GLUED^{fit}



THE FULL HAUTE COUTURE PROGRAM HAS BEEN TESTED ON MAINTENANCE AND FITTING REQUIREMENTS.
TO GET YOUR MAINTENANCE ADVICE AND FITTING INSTRUCTIONS, VISIT OUR WEBSITE LOUISDEPOORTERE.COM

THE HC COLLECTION CONTRIBUTES TO YOUR BREEAM AND LEED PROJECTS

NOTE : SLIGHT MARKS AND VARIATIONS IN THE SURFACE COLOUR AND TEXTURE ARE AN INHERENT
CHARACTERISTIC AND SHOULD NOT BE MISTAKEN AS A FAULT, THEY ARE PART OF THEIR UNIQUE APPEAL.

ALL PATENTS RIGHTS RESERVED © PROTECTED DESIGNS







**BEAUTIFUL BLEND
OF WOOL AND COTTON
FOR A VERY
'COUTURE' LOOK.**

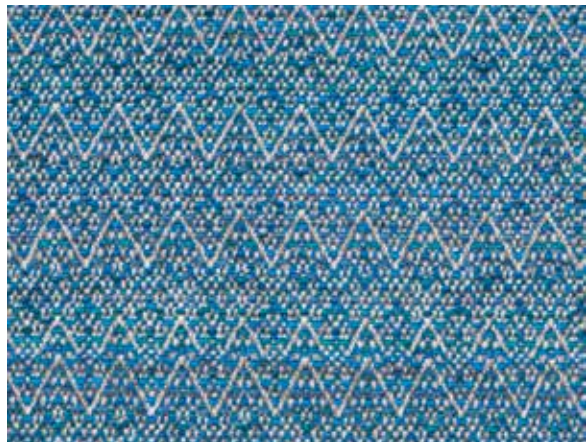
CW KARL 8969

GIORGIO



PATTERN REPEAT

WIDTH : 3CM | 1,18" - LENGTH : 5CM | 1,97"



CW GIORGIO 8964



CW GIORGIO 8965



CW GIORGIO 8966



CW GIORGIO 8967

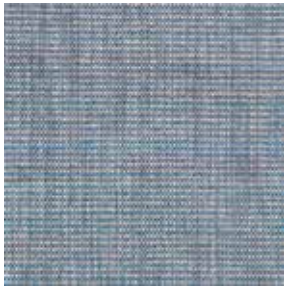
CW GIORGIO 8965



CW KARL 8980



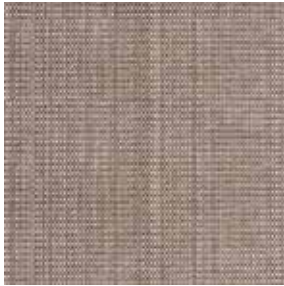
CW KARL 8975



CW KARL 8971



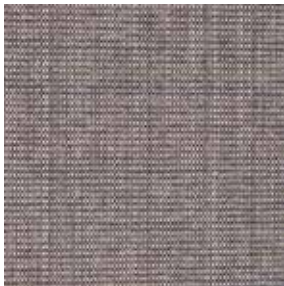
CW KARL 8970



CW KARL 8974



CW KARL 8968



CW KARL 8969



CW KARL 8973



CW KARL 8972



CW KARL 8980



CW KARL 8969

KARL

**SIMPLICITY IS THE ULTIMATE
FORM OF SOPHISTICATION**

- Leonardo Da Vinci -

PATTERN REPEAT
WIDTH : 295CM | 9'8" - LENGTH : 48CM | 3'5"

MIUCCIA



CW MIUCCIA 8979

PATTERN REPEAT
WIDTH : 2,5CM | 1" - LENGTH : 5CM | 2"



CW MIUCCIA 8976



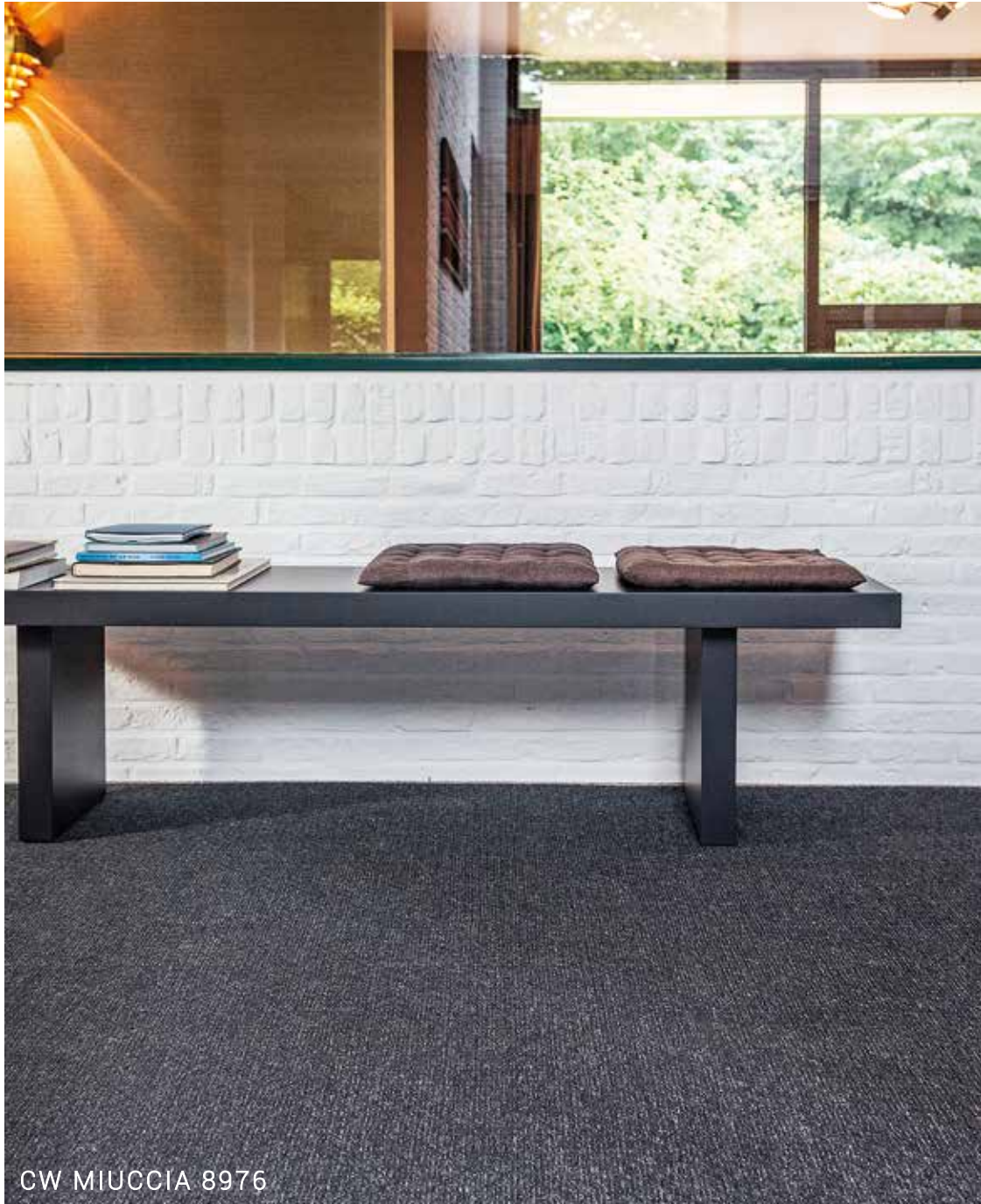
CW MIUCCIA 8978



CW MIUCCIA 8977



CW MIUCCIA 8979



CW MIUCCIA 8976



STAIR RUNNERS

*There is no elevator to a perfect interior.
You have to take the stairs!*



6
DESIGNS

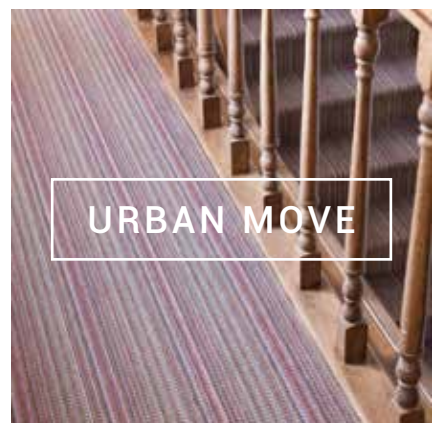
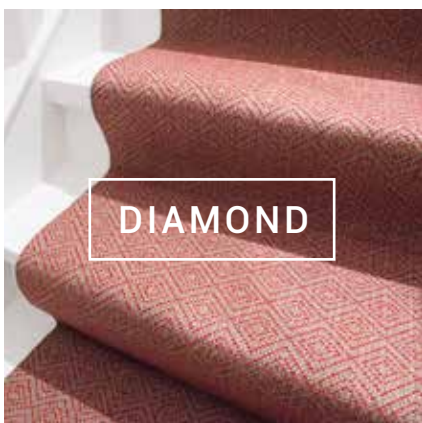
30
COLOURWAYS



Haute Couture Design Stair Runners come with a not noticeable blind finish.
You have 6 designs and over 30 colourways to choose from.

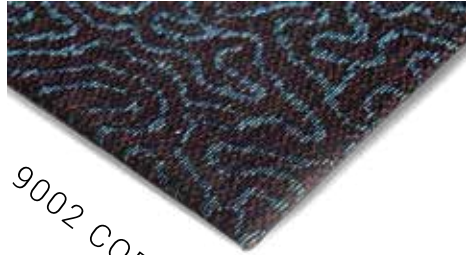
A new dimension is added to the Haute Couture DesignCollection with the option to introduce in purpose designed stair runner form. Add that warm, welcoming touch to your hall or stairway with inviting runners in a variety of design options holding intricate texture and patterning.

From Karl and Diamond to City Stripe designs, in WW, CP and CW wool and chenille mix qualities, there is a myriad of design possibility on offer. With six designs and over 30 colourways to choose from, there is sure to be a combination of shade and texture to perfectly suit your style. Haute Couture purpose designed runners arrive in a standard width of 70cm or 27" with a blind finish.

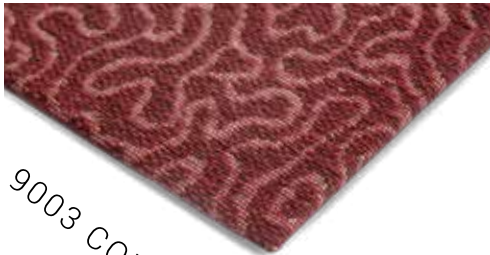




9001 CORAL



9002 CORAL



9003 CORAL



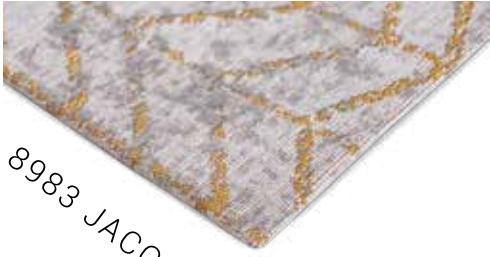
9004 CORAL



9005 CORAL



9006 CORAL



8983 JACOB



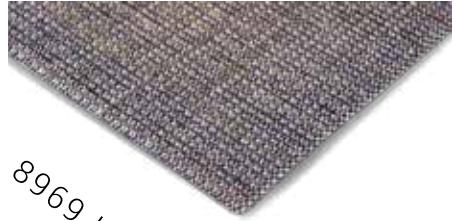
JACOB



KARL



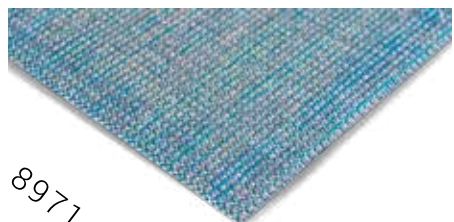
8968 KARL



8969 KARL



8970 KARL



8971 KARL



8972 KARL



8973 KARL



8600 DIAMOND



8601 DIAMOND



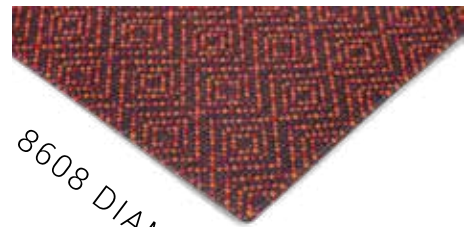
8606 DIAMOND



8602 DIAMOND



8603 DIAMOND



8608 DIAMOND



8604 DIAMOND



8605 DIAMOND



8620 DIAMOND



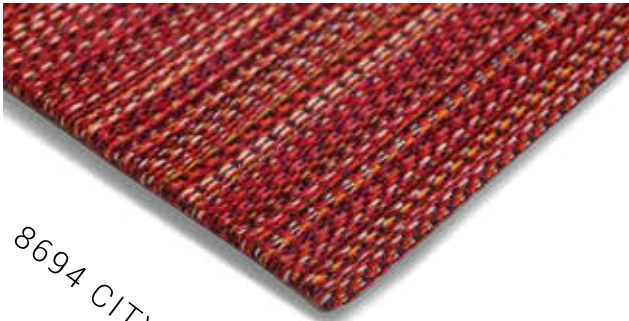
DIAMOND



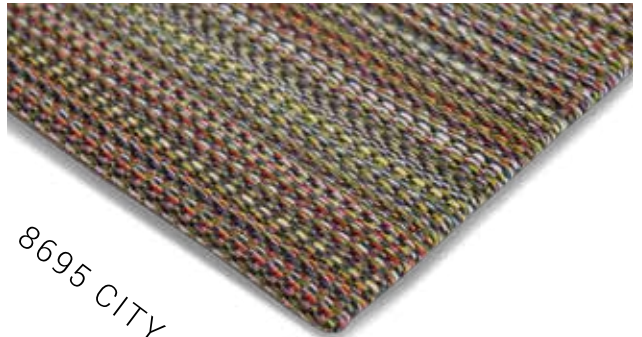




CITY STRIPE



8694 CITY STRIPE



8695 CITY STRIPE



8696 CITY STRIPE



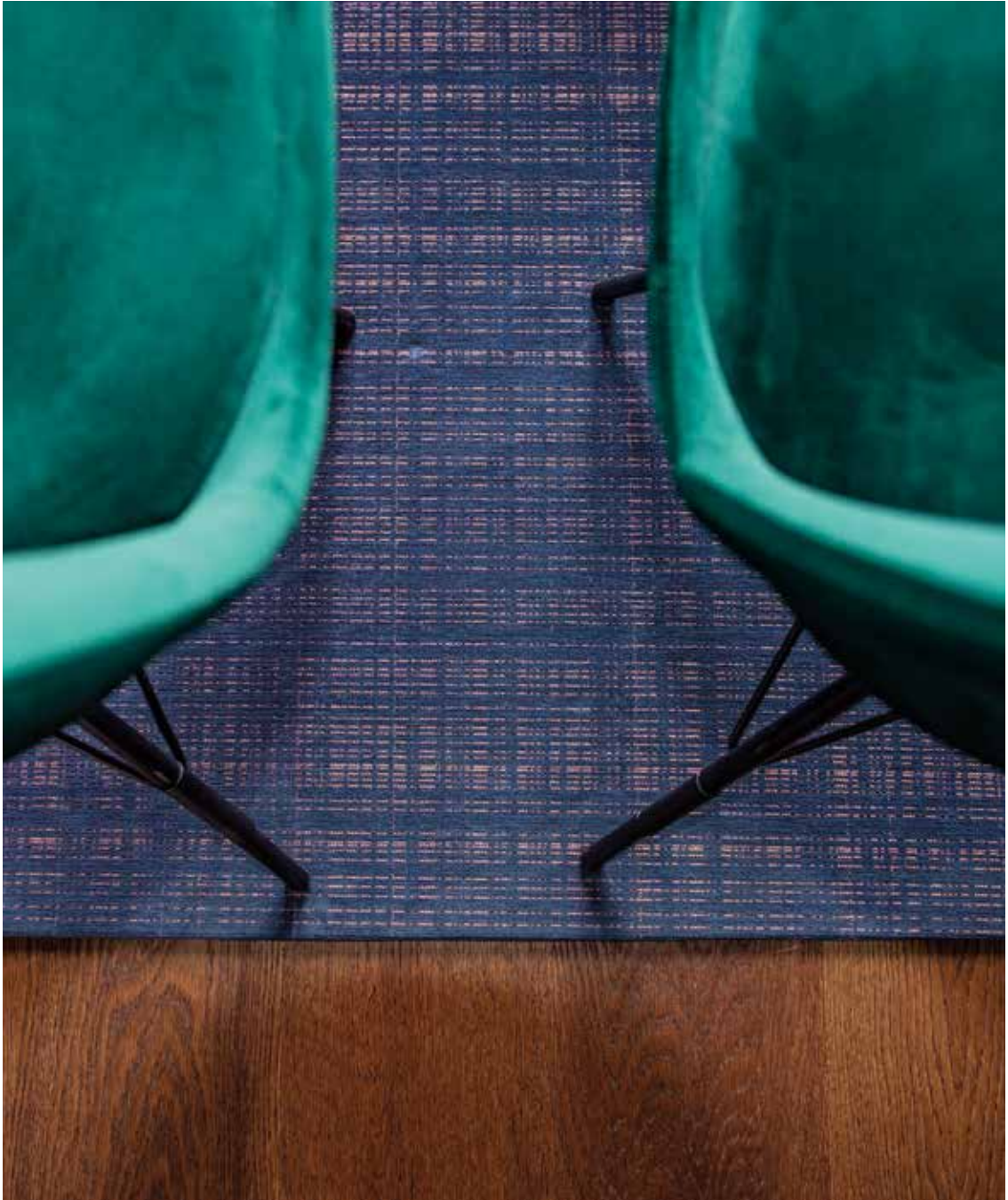
8697 CITY STRIPE



URBAN MOVE

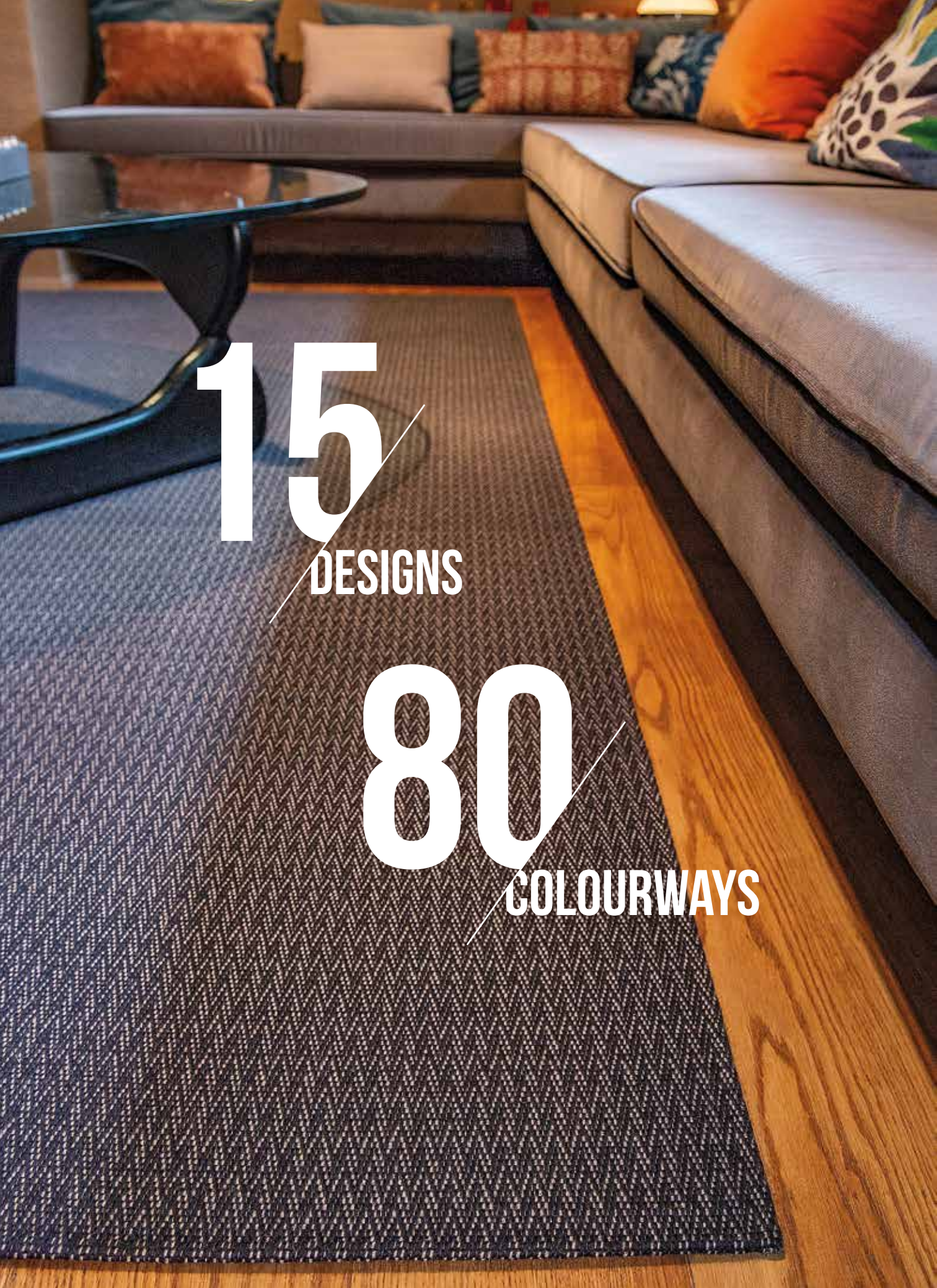


8693 URBAN MOVE



TAILOR MADES

Haute Couture Design Tailor Made - adds elegant individuality to any living space in your home.



15
DESIGNS

80
COLOURWAYS



Haute Couture Design might look fabulous in broadloom, but this collection is superbly suited to rugs with no fewer than 80 'high fashion' looks on offer. Inspiration arrives from Morocco, Scandinavia and beyond, so you can meet your style requirements, whether modern or classic. A plethora of colourways are available in 100% wool, or look to CW and CP qualities that mix chenille with wool and high gloss polyester yarns. Finally, cap this exclusive service with bespoke sizing and beautiful blind finish.

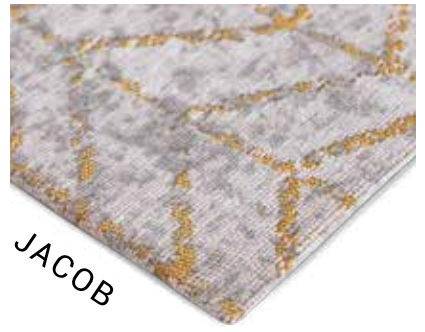




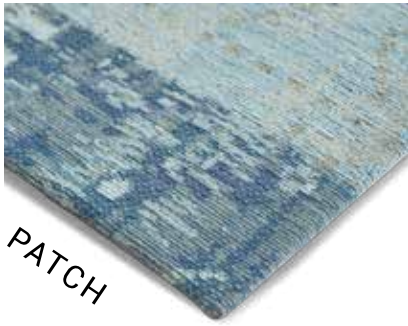
AGRA



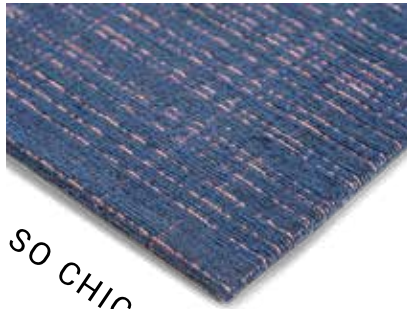
CORAL



JACOB



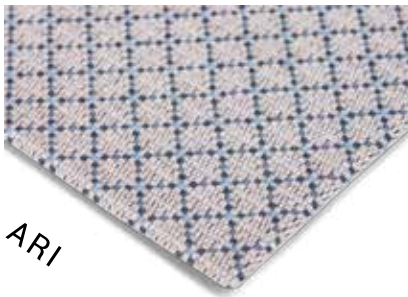
PATCH



SO CHIC



BATIK



ARI



CITY STRIPE



DIAMOND



URBAN MOVE



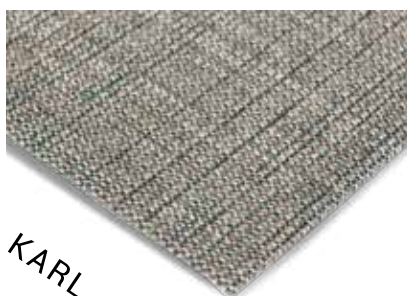
ZAG



ZIG



GIORGIO



KARL



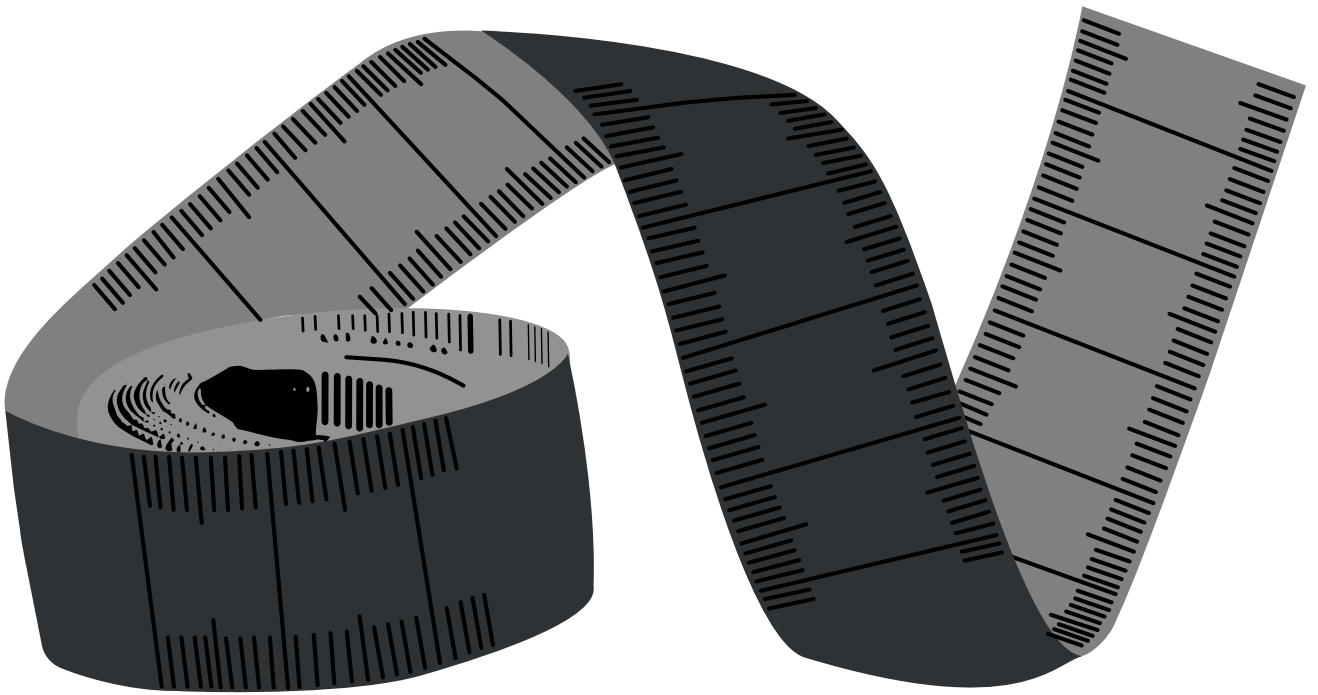
MIUCCIA





EVERYTHING IN HAUTE COUTURE IS HAUTE COUTURE EVEN THE SEAM

In order to respond to your aesthetic requirements,
we've created a unique handcrafted seam to finish
your Haute Couture Design carpet or tailor made rug.



TECHNICALS



HAUTE COUTURE COLLECTION

TECHNICAL SPECIFICATIONS

QUALITÉ | KWALITEIT | QUALITÄTSBEZEICHNUNG | QUALITY

WW

TECHNIQUE DE FABRICATION | FABRICAGEMETHODE | HERSTELLUNGSVERFAHREN | MANUFACTURATION PROCESS

JACQUARD FLATWEAVE

COMPOSITION | SAMENSTELLING | ZUSAMMENSETZUNG | COMPOSITION

100% WOOL

COMPOSITION DOUBLE-DOSSIER | SAMENSTELLING RUG TAPIJT | ZUSAMMENSETZUNG TEPPICHRÜCKEN | BACKING COMPOSITION

100% RECYCLED PET BACKING

COMPOSITION TOTALE | TOTALE SAMENSTELLING | GESAMTZUSAMMENSETZUNG | TOTAL COMPOSITION

70% WOOL | 30% PET

LARGUER | BREEDTE | BREITE | WIDTH

2,95 | 9'8"

HAUTEUR | HOOGTE | GESAMTHÖHE | HEIGHT

± 9mm | 0,35"

POIDS | GEWICHT | GEWICHT | WEIGHT

2215 gr/m² | 65,3 oz/sqy



CLASSIFICATION	GENERAL OVERALL USE CLASS 23/32 LUXURY CLASS LC1
CASTOR CHAIR	INTENSIVE USE
STAIRS	INTENSIVE USE
DIMENSIONAL STABILITY	DIMENSIONALLY STABLE WHEN GLUED
THERMAL RESISTANCE	Bfl-S1
IMPACT SOUND	0,106 m ² K/W
	Δ LW 31db
	according to BS 4790 / CFR 1630 - FF - 1 - 70
	according to CAN CGSB 4.2 - 27,6



HAUTE COUTURE COLLECTION

TECHNICAL SPECIFICATIONS

QUALITÉ | KWALITEIT | QUALITÄTSBEZEICHNUNG | QUALITY

CP

TECHNIQUE DE FABRICATION | FABRICAGEMETHODE | HERSTELLUNGSVERFAHREN | MANUFACTURATION PROCESS

JACQUARD FLATWEAVE

COMPOSITION | SAMENSTELLING | ZUSAMMENSETZUNG | COMPOSITION

75% POLYAMIDE | 15% POLYESTER | 10% COTTON

COMPOSITION DOUBLE-DOSSIER | SAMENSTELLING RUG TAPIJT | ZUSAMMENSETZUNG TEPPICHRÜCKEN | BACKING COMPOSITION

100% RECYCLED PET BACKING

COMPOSITION TOTALE | TOTALE SAMENSTELLING | GESAMTZUSAMMENSETZUNG | TOTAL COMPOSITION

50% POLYAMIDE | 33% PET | 12% POLYESTER | 5% COTTON

LARGUER | BREEDTE | BREITE | WIDTH

2,95m | 9'8"

HAUTEUR | HOOGTE | GESAMTHÖHE | HEIGHT

± 9mm | 0,35"

POIDS | GEWICHT | GEWICHT | WEIGHT

2215 gr/m² | 64,6 oz/sqy



CLASSIFICATION	GENERAL OVERALL USE CLASS 23/32 LUXURY CLASS LC1
CASTOR CHAIR	INTENSIVE USE
STAIRS	INTENSIVE USE
DIMENSIONAL STABILITY	CONFORM FOR GLUED Bfl-S1
THERMAL RESISTANCE	0,10 m ² K/W
IMPACT SOUND	Δ LW 30db according to BS 4790 / CFR 1630 - FF - 1 - 70 according to CAN CGSB 4.2 - 27,6



HAUTE COUTURE COLLECTION

TECHNICAL SPECIFICATIONS

QUALITÉ | KWALITEIT | QUALITÄTSBEZEICHNUNG | QUALITY

CW

TECHNIQUE DE FABRICATION | FABRICAGEMETHODE | HERSTELLUNGSVERFAHREN | MANUFACTURATION PROCESS

JACQUARD FLATWEAVE

COMPOSITION | SAMENSTELLING | ZUSAMMENSETZUNG | COMPOSITION

75% WOOL | 25% COTTON

COMPOSITION DOUBLE-DOSSIER | SAMENSTELLING RUG TAPIJT | ZUSAMMENSETZUNG TEPPICHRÜCKEN | BACKING COMPOSITION

100% RECYCLED PET BACKING

COMPOSITION TOTALE | TOTALE SAMENSTELLING | GESAMTZUSAMMENSETZUNG | TOTAL COMPOSITION

50% WOOL | 30% PET | 20% COTTON

LARGUER | BREEDTE | BREITE | WIDTH

2,95m | 9'8"

HAUTEUR | HOOGTE | GESAMTHÖHE | HEIGHT

± 9mm | 0,35"

POIDS | GEWICHT | GEWICHT | WEIGHT

2032 gr/m² | 59,9 oz/sq



CLASSIFICATION	GENERAL OVERALL USE CLASS 23/32 LUXURY CLASS LC1
CASTOR CHAIR	INTENSIVE USE
STAIRS	INTENSIVE USE
DIMENSIONAL STABILITY	GLUED Bfl-S1 FOR CARPET LOOSE LAYED Cfl-S1 FOR TAILOR MADE
THERMAL RESISTANCE	0,098 m ² K/W
IMPACT SOUND	Δ LW 29db according to BS 4790 / CFR 1630 - FF - 1 - 70 according to CAN CGSB 4.2 - 27,6

DISCOVER OUR OTHER PRODUCTS

1

W-COLLECTION

a collection of traditional Wilton Rugs with an integrated luxurious felt backing, hand finished and in three subtle finishing options : Carved | Leather | Fantasy. The Jackies, rugs with 14 jacquard designs from our Louis De Poortere Archives make this offer of modern rugs full of positive energy even more comprehensive.

2

THE RUG COLLECTION

a collection of flatweave rugs with distressed areas and intricate stitching detail to give a true 'vintage' look.

3

LES TISSÉS

a tailor made stair runner and narrow loom program
100% wool - wilton woven jacquard

4

STAIRRUNNERS COLLECTION

standard stair runner program
80% wool - 20% polyamide - wilton woven jacquard

5

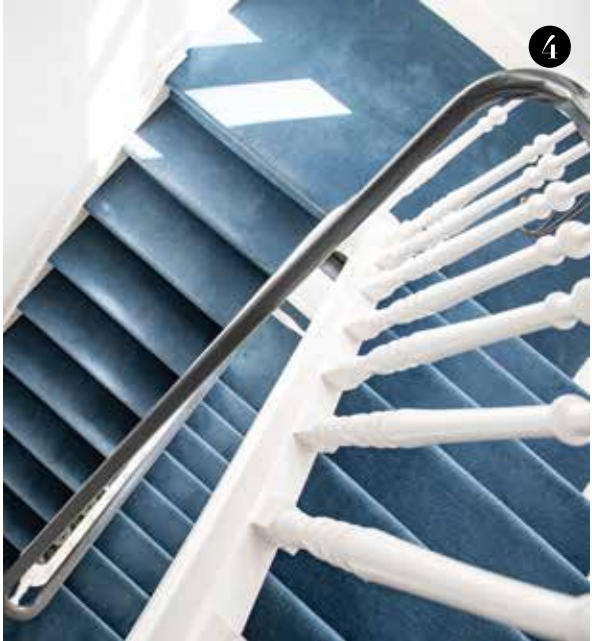
COLLABORATIONS

a standard size rug collection - flatweave and hand tufted with the brands Romo & Villa Nova

6

THE WALL TO WALL COLLECTION

a wilton woven broadloom carpet program
100% wool - cut and loop pile







Graphic Design : Louis De Poortere

Text : Louis De Poortere

Photography : Louis De Poortere

© 2020 Copyright De Poortere Deco

All copyrights are owned by De Poortere Deco S.A.

Registered designs and colourways applied for infringements of our copyright by any party will be vigorously pursued. De Poortere Deco reserves the right to alter or amend descriptions and specifications given in this publication in the light of technical developments.

**louis de
poortere** 
- since 1929 -

DE POORTERE DECO SA
RUE DE LA ROYENNE 45B - 7700 MOUSCRON - BELGIUM
PHONE +32(0)56 393 393
FAX +32(0)56 393 306
INFO@LDP.BE

LOVE • LIKE • SHARE



MADE IN BELGIUM
LOUISDEPOORTERE.COM